


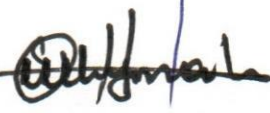
**GIS & REMOTE SENSING DIVISION  
DEPARTMENT OF FOREST RESEARCH AND DEVELOPMENT  
FORESTRY DEVELOPMENT AUTHORITY**

Whein Town, Mount Barclay  
Montserrado County, Liberia

**INTERNAL MEMORANDUM**

TO : Hon. Borwen L. Sayon  
DMD/ Operations

THRU : Mr. Mitchell S. Kumbelay   
TM/ R & D

FROM : Whymah M. Goyanvator   
Manager  
GIS and Remote Sensing Division

SUBJ : **Report on the Validation Conducted in Karluway #1 Community Forest  
Karluway 1 and 2 Districts, Maryland County**

DATE : November 27, 2017

We are pleased to submit to you findings from the validation conducted in Karluway #1 Community Forest, Karluway 1 and 2 Districts, Maryland County.

Please find attached.

Best regards.

Cc. FILE

## **1. Introduction**

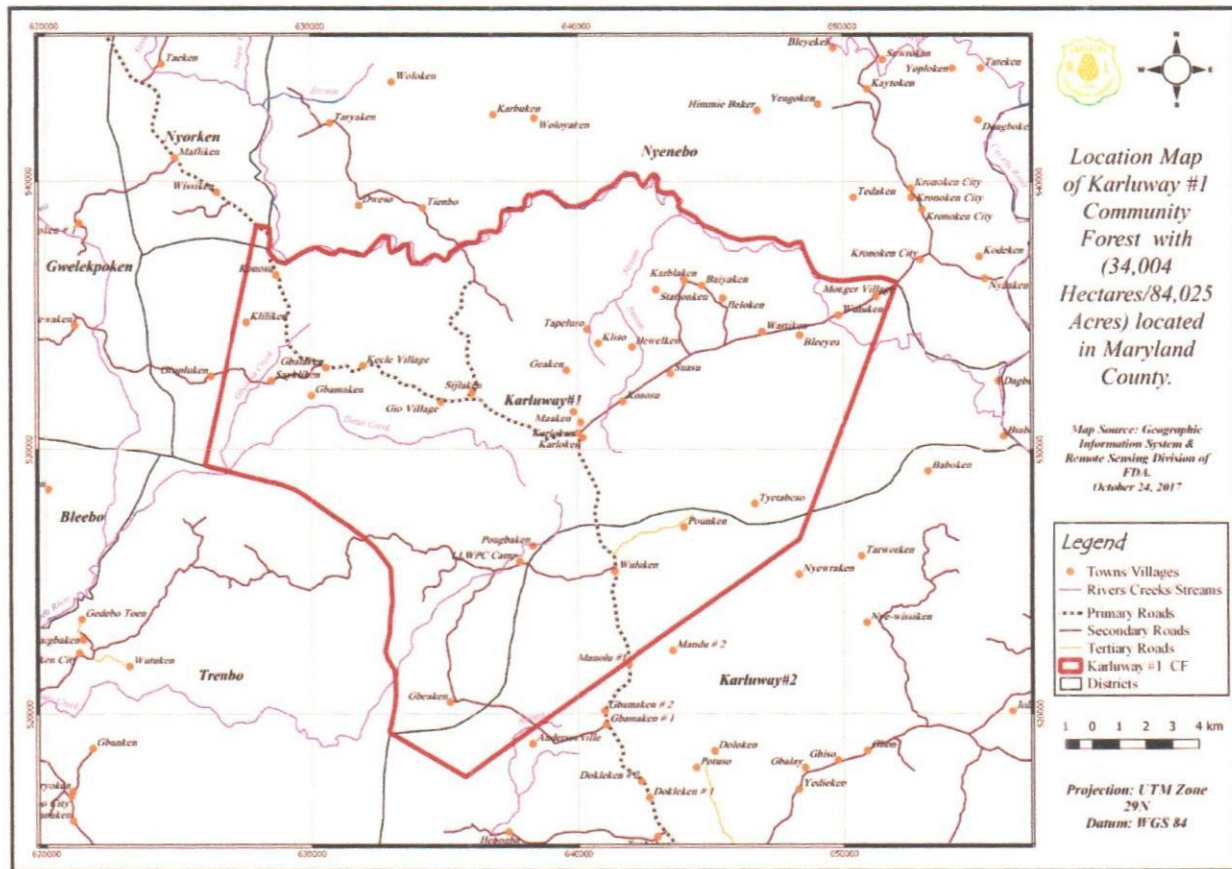
Having concluded Socio-Economic Survey for Karluway #1 Community Forest, the GIS & Remote Sensing Division was mandated to conduct validation exercise on the location, metes and bounds, the actual shape and size of the above name community forest.

Predicated upon this mandate, a team of technicians, in person of (Omega J. Paye and Cyril T. Brown, GIS and Inventory Officers) from the Division were directed to carry out said task. During the process, our technicians were able to complete the validation exercise.

Below are findings from the validation exercise of Karluway #1 Community Forest, showing the location, relief, forest cover map, the metes and bounds is also completed and available at the GIS Lab.

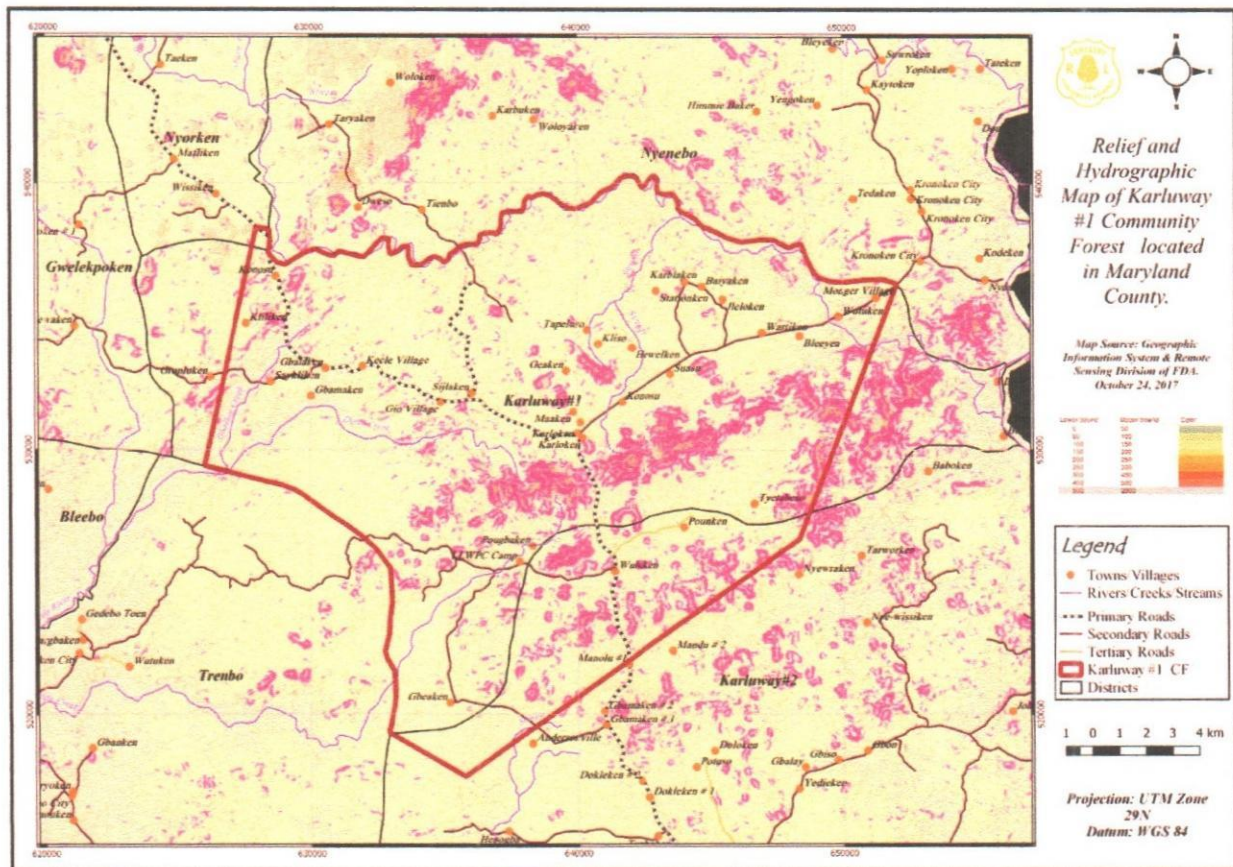
## **2. Findings**

- ✓ Karluway #1 Community Forest lies within Latitude 625829 540594 North of the Equator and Longitude 625781 517135 West of the Greenwich Meridian.
- ✓ It has a total area of 34,004 hectares / 84,025 acres and is located in Karluway 1 and 2 Districts, Maryland County. (see figures 1, 2,& 3).
- ✓ That it does not overlap with any FDA Concession, Protected and Proposed Protected areas. (see figures 4)

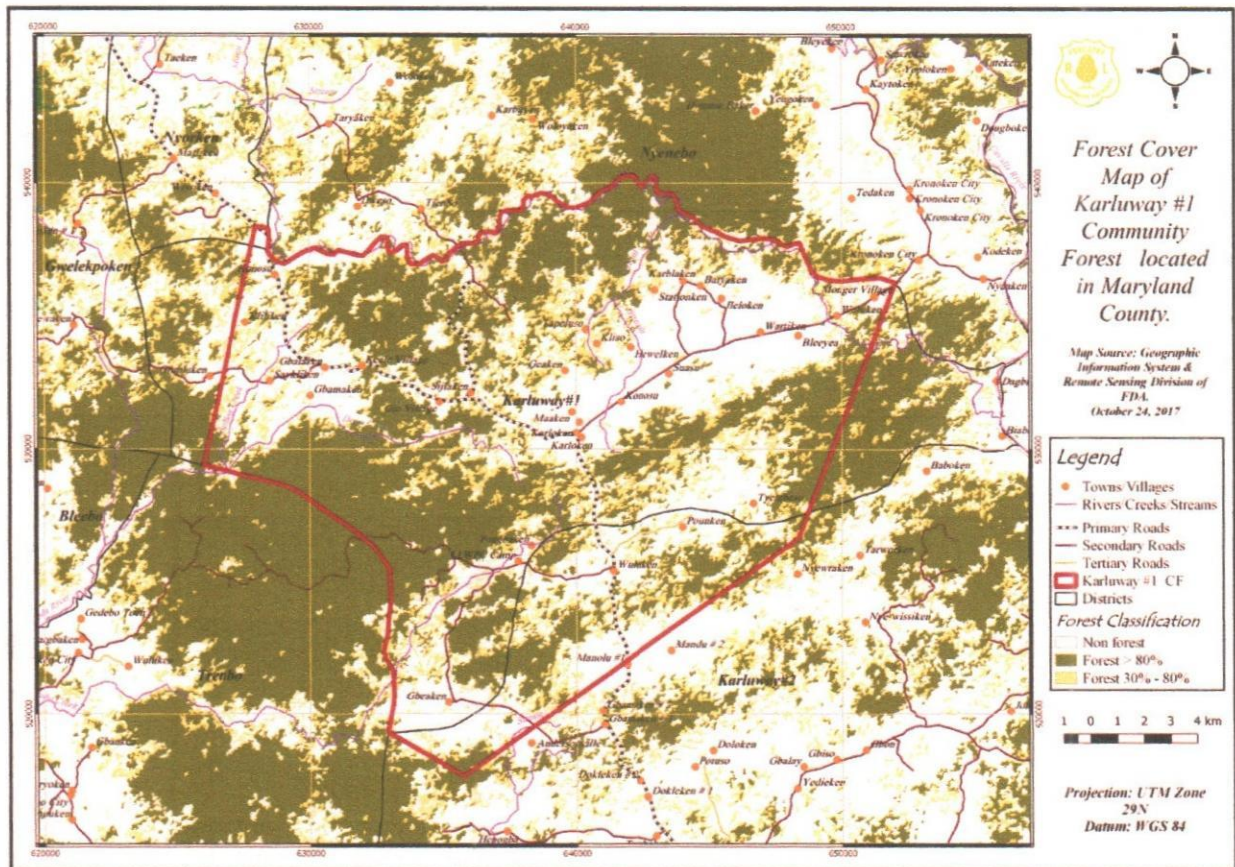


**Figures 1: Location Map of Karluway #1 Community Forest**



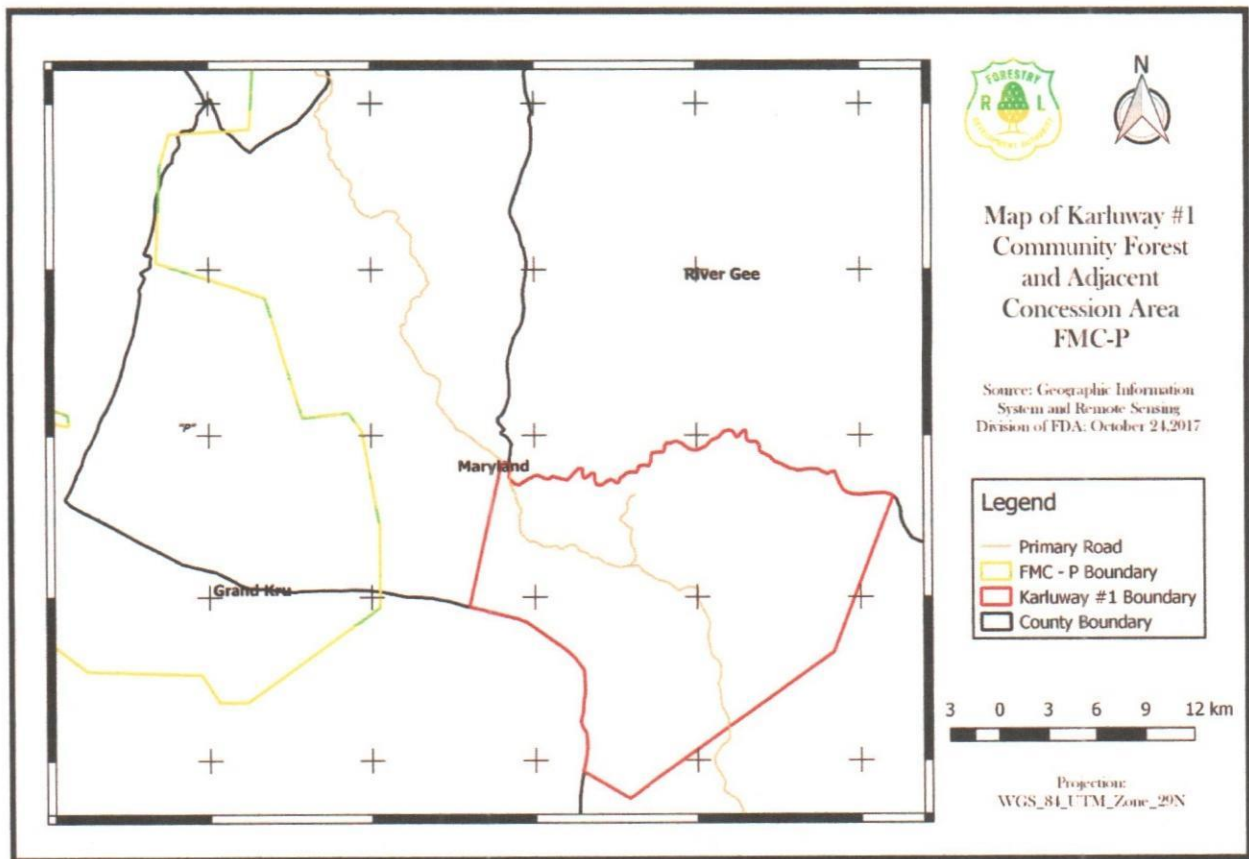


**Figures 2: Relief Map of Karluway #1 Community Forest**



**Figures 3: Forest Cover Map of Karluway #1 Community Forest**





**Figures 4: Map of Karluway #1 Community Forest Showing Adjacent Concession (FMC-P)**

### 3. Recommendation

We recommend that the 34,004 hectares/84,025 acres be awarded for Karluway #1 Community Forest.